

Sports hall luminaires - White louvre - direct wide distribution

Sheet steel housing Housing colour traffic white RAL 9016; Direct wide-beam light distribution using sheet steel metal louvre with robust smooth cross blades; painted white similar to RAL 9016; with V reflector, can be folded down on one side; ball-proof. Louvre fastening using ball-proof spring catches that can only be opened with tools; fitted with 1x Regiolux LED unit, neutral white light colour (840) with very good colour consistency and high colour rendering Ra>80; Electrical connection via 3-pole connection terminal with plug-in contacts.; With changeover converter for emergency lighting operation on request. The accessories for mounting rail or suspended mounting installation must be ordered separately.

CHARACTERISTICS

Order number	68130024100
EAN number	4020863281466
Commodity code	94051190
Certification mark	IP 20, Protection class I, VDU 65°<3000, F, Protection against tennis ball impact, Protection against ball impact, Indoor, CE
Impact resistance (IK rating)	IK03
Ambient temperatur	ta 25°C
Warranty period	5 years
State funding programs	BEG - Federal funding for efficient buildings (valid only for Germany)

ELECTRICAL ENGINEERING

Controller	Electronic driver (1 pcs.)
System output	76W
Mains voltage	230V/50Hz
Circuit breakers (inrush current)	13 pieces/B10, 22 pieces/B16, 22 pieces/C10, 37 pieces/C16
Energy efficiency class/light source	B

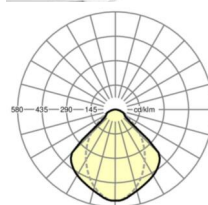
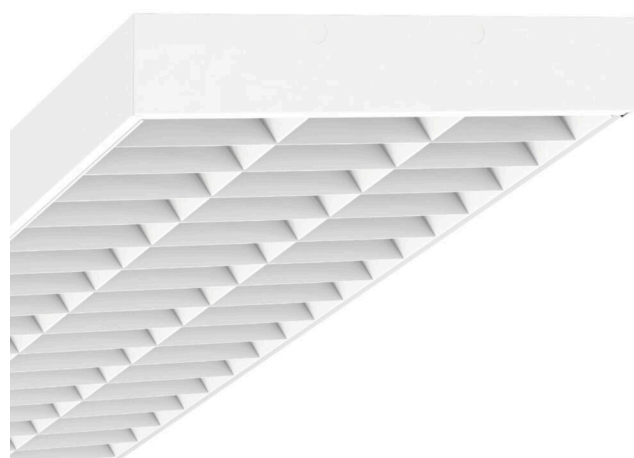
LIGHTING TECHNOLOGY

Placement	LED, Colour rendering/Light colour CRI ≥ 80 / 4000K
Colour tolerance (MacAdam)	3SDCM
Photobiological safety (Luminaire)	RG1
Nominal luminous flux	9719lm
LED service life	50000h L80/B10 (Tq 25°C)
Luminaire luminous efficiency	128lm/W
Beam angle	95°
UGR lat./long.	17.8 / 18.1

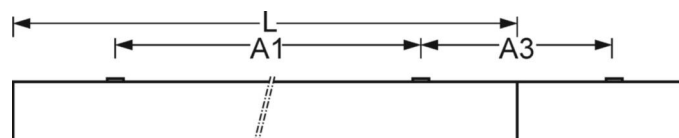
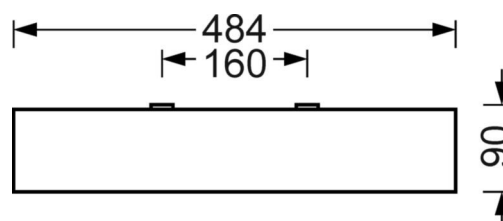
MECHANICS

Housing colour	traffic white RAL 9016
Dimensions (LxWxH/DxH)	1548mm x 484mm x 90mm
Weight (net)	20.26kg
Cable entry KE (X/Y)	0mm/70mm
Type of installation	Ceiling-mounted single installation, Ceiling-mounted trunking installation, Pendant individual mounting, Pendant light strip mounting, Mounting rail installation
Rotating mounting bracket	15° max. longitudinal axis / surface-mounted installation; transverse axis / mounting with accessories bracket, chain 51° max. and transverse axis / mounting with accessories on the support rail 40° max.

DEEP-LINK

<https://www.regiolux.de/en/article/68130024100>


Reference	LED 9700lm 840
ηLB	100 %
Φ ↓/↑	100 % / 0 %
UGR lat./long.	17.8 / 18.1
VDU	65° < 3000cd/m²



Dimensions

L	1548 mm	Length
B	484 mm	Width
H	90 mm	Height
A1	1300 mm	Mounting distance single mounting
A3	248 mm	Mounting distance between luminaires in a light run arrangement
A4	160 mm	Mounting distance (width)
X	0 mm	Distance cable infeed to the center of the luminaire on the X-axis
Y	70 mm	Distance cable infeed to the center of the luminaire on the Y-axis

